

PLAN
Scale 1"=40'

SHEET NO 1
PLAN NO 1369
WESTERN AVENUE SEWER
 BETWEEN
 TWENTY-FIRST STREET & HIGHLAND AVENUE
 AND
HIGHLAND AVENUE SEWER
 BETWEEN
 WESTERN AVENUE & MUSCOTT STREET
 IN THE
 CITY OF SAN BERNARDINO, CALIFORNIA

JULY 1951
 R.D. FORSYTHE
 City Engineer

PLAN ADOPTED July 16, 1951

FILED
 July 19, 1951
 City Engineer

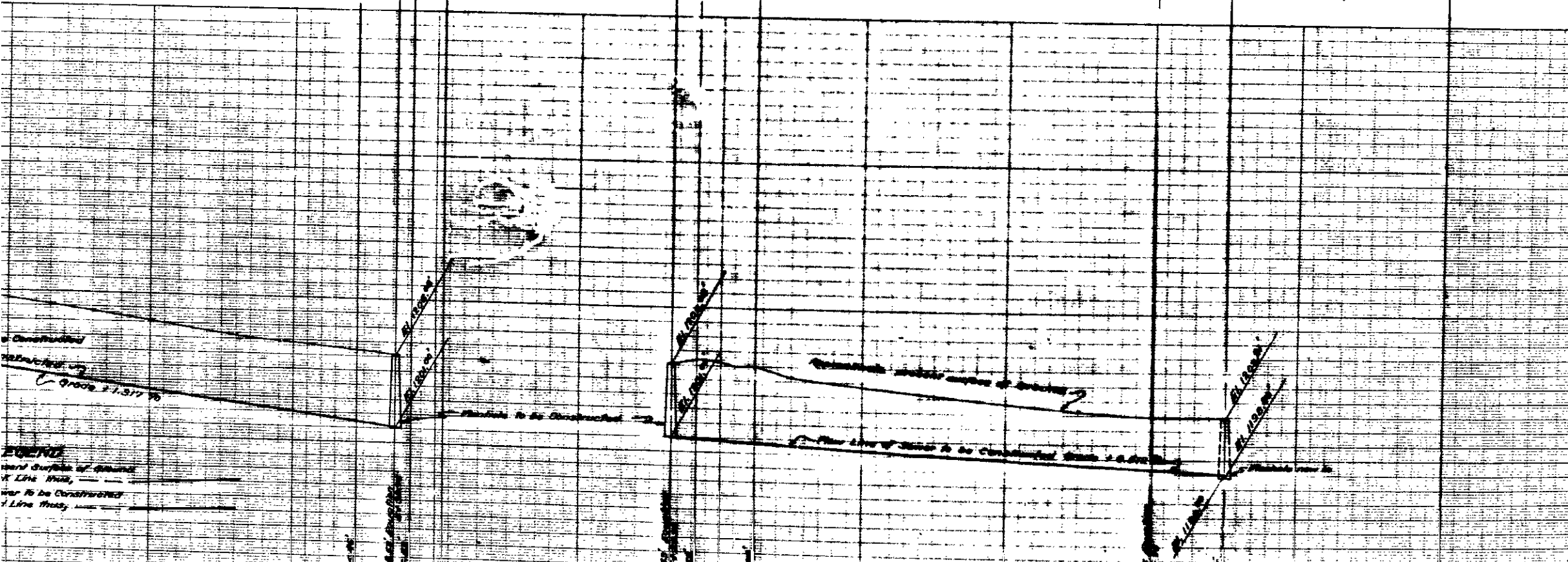
LEGEND
 1/2" = 1/2" means inch or inches
 1' = 1' means feet or feet
 N = Northwest corner
 E = East corner
 El. means Elevation
 6" = 6" means 6" Whiffed Pipe Sewer to be constructed shown thus
 6" x 4" = 6" x 4" means 6" x 4" Whiffed Pipe Sewer to be constructed shown thus
 Manholes to be constructed shown thus
 Manholes now in shown thus

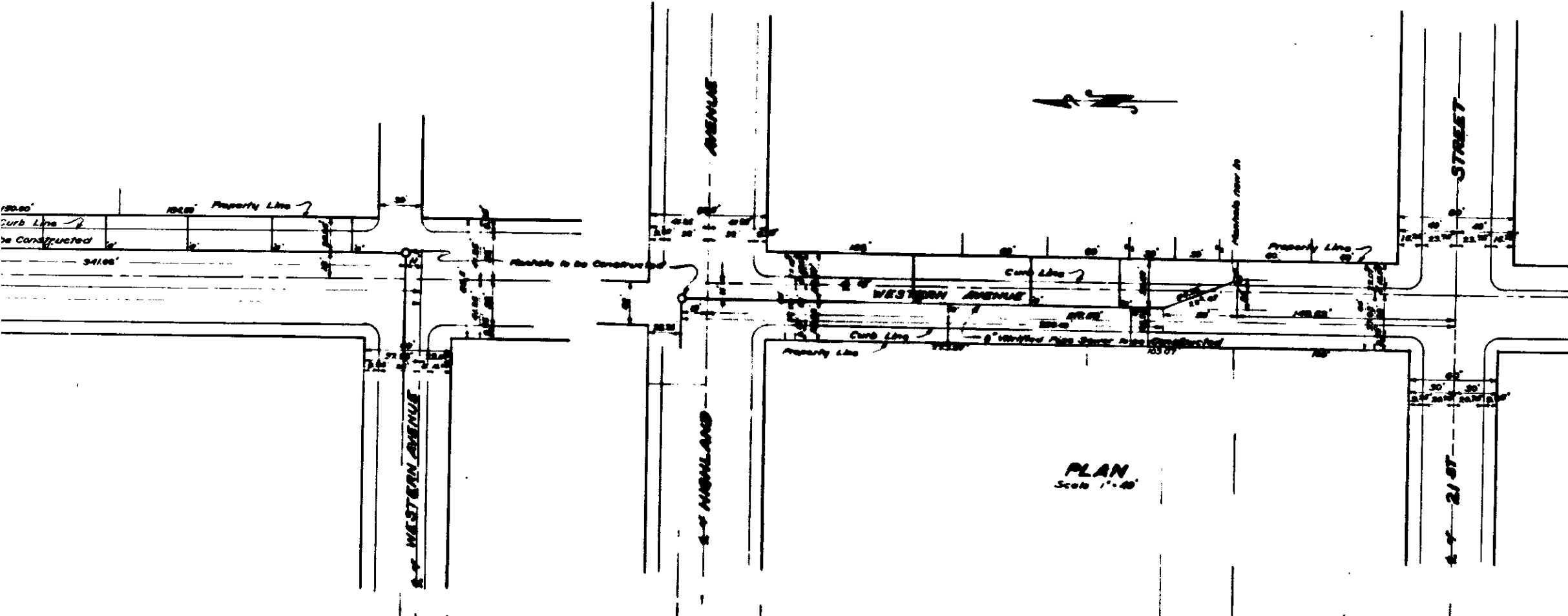
SEWER DETAIL
 Lineal Ft. of 6" Whiffed Pipe Sewer to be constructed
 Lineal Ft. of 6" x 4" Whiffed Pipe Sewer to be constructed
 No. of 6" x 4" Manholes with 4" Connecting Sewers to be constructed
 No. of Manholes to be constructed

TITLE TO STREETS
 WESTERN AVENUE West side of 19th St. & 21st St. by 1912
 HIGHLAND AVENUE West side of 19th St. & 21st St. by 1912
 HIGHLAND AVENUE East side of 19th St. & 21st St. by 1912
 TWENTY-FIRST STREET West side of 19th St. & 21st St. by 1912
 MUSCOTT STREET West side of 19th St. & 21st St. by 1912
 All streets shown in this plan are shown in feet and inches
 and are shown as established by Resolution No. 1190
 of the City of San Bernardino recorded in Book 9 of Official
 Records of San Bernardino County California.

GRADE RESOLUTION
 Grade of WESTERN AVENUE was established by Resolution
 No. 1190
 Grade of HIGHLAND AVENUE was established by Resolution
 No. 1190

DATUM
 All elevations shown in this plan are in feet and inches
 and are shown as established by Resolution No. 1190
 of the City of San Bernardino recorded in Book 9 of Official
 Records of San Bernardino County California.





PLAN
Scale 1"=40'

SHEET NO 1
PLAN NO 1369
WESTERN AVENUE SEWER
 BETWEEN
 TWENTY-FIRST STREET & HIGHLAND AVENUE
 AND
HIGHLAND AVENUE SEWER
 BETWEEN
 WESTERN AVENUE & MUSCOTT STREET
 IN THE
 CITY OF SAN BERNARDINO, CALIFORNIA

JULY 1951 R.D. FORSYTHE
City Engineer

PLAN ADOPTED July 16, 1951

FILED
 July 19, 1951
 R.D. Forsythe

LEGEND
 1/2" = 1/2" means inch or inches
 1' = 1' means foot or feet
 N means North
 E means East
 S means South
 W means West
 8" means 8" Whitted Pipe Sewer to be constructed shown thus
 6" x 4" means 6" x 4" Whitted Pipe Sewer to be constructed shown thus
 Manholes to be constructed shown thus
 Manholes now in shown thus

SEWER DETAIL
 Lineal Ft. of 8" Whitted Pipe Sewer to be constructed 152.00
 Lineal Ft. of 6" x 4" Whitted Pipe Sewer to be constructed 618.00
 No. of 6" x 4" Manholes with 4" Connecting Sewers to be constructed 25
 No. of Manholes to be constructed 4

TITLE TO STREETS
 WESTERN AVENUE West half of TRACT 20, 21, 22, 23, 24, 25, 26, 27, 28, 29, 30, 31, 32, 33, 34, 35, 36, 37, 38, 39, 40, 41, 42, 43, 44, 45, 46, 47, 48, 49, 50, 51, 52, 53, 54, 55, 56, 57, 58, 59, 60, 61, 62, 63, 64, 65, 66, 67, 68, 69, 70, 71, 72, 73, 74, 75, 76, 77, 78, 79, 80, 81, 82, 83, 84, 85, 86, 87, 88, 89, 90, 91, 92, 93, 94, 95, 96, 97, 98, 99, 100, 101, 102, 103, 104, 105, 106, 107, 108, 109, 110, 111, 112, 113, 114, 115, 116, 117, 118, 119, 120, 121, 122, 123, 124, 125, 126, 127, 128, 129, 130, 131, 132, 133, 134, 135, 136, 137, 138, 139, 140, 141, 142, 143, 144, 145, 146, 147, 148, 149, 150, 151, 152, 153, 154, 155, 156, 157, 158, 159, 160, 161, 162, 163, 164, 165, 166, 167, 168, 169, 170, 171, 172, 173, 174, 175, 176, 177, 178, 179, 180, 181, 182, 183, 184, 185, 186, 187, 188, 189, 190, 191, 192, 193, 194, 195, 196, 197, 198, 199, 200, 201, 202, 203, 204, 205, 206, 207, 208, 209, 210, 211, 212, 213, 214, 215, 216, 217, 218, 219, 220, 221, 222, 223, 224, 225, 226, 227, 228, 229, 230, 231, 232, 233, 234, 235, 236, 237, 238, 239, 240, 241, 242, 243, 244, 245, 246, 247, 248, 249, 250, 251, 252, 253, 254, 255, 256, 257, 258, 259, 260, 261, 262, 263, 264, 265, 266, 267, 268, 269, 270, 271, 272, 273, 274, 275, 276, 277, 278, 279, 280, 281, 282, 283, 284, 285, 286, 287, 288, 289, 290, 291, 292, 293, 294, 295, 296, 297, 298, 299, 300, 301, 302, 303, 304, 305, 306, 307, 308, 309, 310, 311, 312, 313, 314, 315, 316, 317, 318, 319, 320, 321, 322, 323, 324, 325, 326, 327, 328, 329, 330, 331, 332, 333, 334, 335, 336, 337, 338, 339, 340, 341, 342, 343, 344, 345, 346, 347, 348, 349, 350, 351, 352, 353, 354, 355, 356, 357, 358, 359, 360, 361, 362, 363, 364, 365, 366, 367, 368, 369, 370, 371, 372, 373, 374, 375, 376, 377, 378, 379, 380, 381, 382, 383, 384, 385, 386, 387, 388, 389, 390, 391, 392, 393, 394, 395, 396, 397, 398, 399, 400, 401, 402, 403, 404, 405, 406, 407, 408, 409, 410, 411, 412, 413, 414, 415, 416, 417, 418, 419, 420, 421, 422, 423, 424, 425, 426, 427, 428, 429, 430, 431, 432, 433, 434, 435, 436, 437, 438, 439, 440, 441, 442, 443, 444, 445, 446, 447, 448, 449, 450, 451, 452, 453, 454, 455, 456, 457, 458, 459, 460, 461, 462, 463, 464, 465, 466, 467, 468, 469, 470, 471, 472, 473, 474, 475, 476, 477, 478, 479, 480, 481, 482, 483, 484, 485, 486, 487, 488, 489, 490, 491, 492, 493, 494, 495, 496, 497, 498, 499, 500, 501, 502, 503, 504, 505, 506, 507, 508, 509, 510, 511, 512, 513, 514, 515, 516, 517, 518, 519, 520, 521, 522, 523, 524, 525, 526, 527, 528, 529, 530, 531, 532, 533, 534, 535, 536, 537, 538, 539, 540, 541, 542, 543, 544, 545, 546, 547, 548, 549, 550, 551, 552, 553, 554, 555, 556, 557, 558, 559, 560, 561, 562, 563, 564, 565, 566, 567, 568, 569, 570, 571, 572, 573, 574, 575, 576, 577, 578, 579, 580, 581, 582, 583, 584, 585, 586, 587, 588, 589, 590, 591, 592, 593, 594, 595, 596, 597, 598, 599, 600, 601, 602, 603, 604, 605, 606, 607, 608, 609, 610, 611, 612, 613, 614, 615, 616, 617, 618, 619, 620, 621, 622, 623, 624, 625, 626, 627, 628, 629, 630, 631, 632, 633, 634, 635, 636, 637, 638, 639, 640, 641, 642, 643, 644, 645, 646, 647, 648, 649, 650, 651, 652, 653, 654, 655, 656, 657, 658, 659, 660, 661, 662, 663, 664, 665, 666, 667, 668, 669, 670, 671, 672, 673, 674, 675, 676, 677, 678, 679, 680, 681, 682, 683, 684, 685, 686, 687, 688, 689, 690, 691, 692, 693, 694, 695, 696, 697, 698, 699, 700, 701, 702, 703, 704, 705, 706, 707, 708, 709, 710, 711, 712, 713, 714, 715, 716, 717, 718, 719, 720, 721, 722, 723, 724, 725, 726, 727, 728, 729, 730, 731, 732, 733, 734, 735, 736, 737, 738, 739, 740, 741, 742, 743, 744, 745, 746, 747, 748, 749, 750, 751, 752, 753, 754, 755, 756, 757, 758, 759, 760, 761, 762, 763, 764, 765, 766, 767, 768, 769, 770, 771, 772, 773, 774, 775, 776, 777, 778, 779, 780, 781, 782, 783, 784, 785, 786, 787, 788, 789, 790, 791, 792, 793, 794, 795, 796, 797, 798, 799, 800, 801, 802, 803, 804, 805, 806, 807, 808, 809, 810, 811, 812, 813, 814, 815, 816, 817, 818, 819, 820, 821, 822, 823, 824, 825, 826, 827, 828, 829, 830, 831, 832, 833, 834, 835, 836, 837, 838, 839, 840, 841, 842, 843, 844, 845, 846, 847, 848, 849, 850, 851, 852, 853, 854, 855, 856, 857, 858, 859, 860, 861, 862, 863, 864, 865, 866, 867, 868, 869, 870, 871, 872, 873, 874, 875, 876, 877, 878, 879, 880, 881, 882, 883, 884, 885, 886, 887, 888, 889, 890, 891, 892, 893, 894, 895, 896, 897, 898, 899, 900, 901, 902, 903, 904, 905, 906, 907, 908, 909, 910, 911, 912, 913, 914, 915, 916, 917, 918, 919, 920, 921, 922, 923, 924, 925, 926, 927, 928, 929, 930, 931, 932, 933, 934, 935, 936, 937, 938, 939, 940, 941, 942, 943, 944, 945, 946, 947, 948, 949, 950, 951, 952, 953, 954, 955, 956, 957, 958, 959, 960, 961, 962, 963, 964, 965, 966, 967, 968, 969, 970, 971, 972, 973, 974, 975, 976, 977, 978, 979, 980, 981, 982, 983, 984, 985, 986, 987, 988, 989, 990, 991, 992, 993, 994, 995, 996, 997, 998, 999, 1000.

GRADE RESOLUTION
 Grade of WESTERN AVENUE was established by Resolution No. 1195
 Grade of HIGHLAND AVENUE was established by Resolution No. 1153

DATUM
 All elevations shown in feet and inches in this plan are above a plane which is 70.45 feet below the City Bench Mark as established by Ordinance 383 of the